

# Goondiwindi Region

2017/18 Visitors' Guide



Bungunya • Goondiwindi • Inglewood  
Talwood • Texas • Toobeah • Yelarbon  
A part of Southern Queensland Country  
[www.grc.qld.gov.au](http://www.grc.qld.gov.au)

Queensland  
AUSTRALIA

Goondiwindi  
REGIONAL  
COUNCIL



# Welcome to Goondiwindi Region

A gateway to Southern Queensland Country

There is something for everyone in the Goondiwindi Region. The communities are rightly proud of our towns with the immaculate and attractive tree-lined streets, public parks and beautiful gardens. You will find that many businesses are family owned and operated and we pride ourselves on the friendly, welcoming nature of our communities.

Goondiwindi Region offers many beautiful and interesting attractions to both tourists and locals, and numerous must do calendar events over the year! Our rivers, dams and other waterways are great assets for the region and warrant sticking around for a few days to try the fishing. Whilst you are here, you can also stop by our most visited landmarks, the statue of 'The Goondiwindi Grey', and the newly redesigned Gunsynd museum. Gunsynd, 'The Goondiwindi Grey', was the thoroughbred racehorse inducted into the Australian Racing Hall of Fame after blitzing the competition in 29 races and placing in the 1972 Melbourne Cup.

Goondiwindi Region boasts an abundance of health and fitness facilities, thriving schools, impressive venues, fantastic events and beautifully manicured parks and gardens. There is so much to take in including our clean, fresh air. No matter whether you are here for a wedding, sporting event, conference, concert, festival or just passing through, we are confident you will find what you are looking for and service second to none.

The purpose of this guide is to give you an idea of the authentic country experiences we have to offer. We cannot wait to welcome you and show you around.



## Contents

4	Getting Here
6	Goondiwindi Regional Map
8	Goondiwindi
14	Talwood
14	Toobeah
15	Bungunya
24	Inglewood
27	Texas
30	Yelarbon
32	Camping
33	Fishing
34	Agriculture



# Getting Here

With five major highways intersecting at Goondiwindi, we are a gateway to the outback and natural access point to Queensland for most interstate travellers, making it easy for everyone to get here. The region is the centre of a vast agricultural and pastoral area, producing cotton, grain, wool, beef, lamb and pork. At every opportunity, we love to incorporate this agricultural theme to make an authentic and genuine country experience for our guests.

The largest urban centre is Goondiwindi with small towns at Inglewood and Texas. Smaller townships and villages are located at Bungunya, Talwood, Toobeah and Yelarbon. The Council area encompasses a total land area of about 19,300 square kilometres with the Queensland/New South Wales border as the southern boundary.

## By Road

The Barwon Highway, the Cunningham Highway, the Gore Highway, the Leichhardt Highway and the Newell Highway serve the Goondiwindi Regional Council area.

The region is an easy driving distance of major centres in South East Queensland.

### Drive times

- Brisbane to Goondiwindi - 4 hours
- Gold Coast to Goondiwindi - 4 hours and 30 minutes
- Moree to Goondiwindi - 1 hour and 20 minutes
- Sunshine Coast to Goondiwindi - 5 hours
- Sydney to Goondiwindi - 8 hours and 45 minutes
- Toowoomba to Goondiwindi - 2 hours and 30 minutes
- Warwick to Goondiwindi - 2 hours

### Bus Services

The towns of Goondiwindi and Inglewood have regular commercial bus services operating daily from Toowoomba and Brisbane.

All towns in the Goondiwindi region are accessible by sealed roads that are suited to all vehicles including caravans.

## By Air

The towns of Goondiwindi and Inglewood have sealed aerodromes and Texas has an unsealed but well maintained airstrip suitable for small aircraft.

### Commercial Flights

There are no commercial passenger air services to the region however the larger aerodrome at Goondiwindi does have charter services operating.

For long distance travellers commercial services are available at nearby airports.

### Moree Airport:

- Sydney to Moree - Qantas
- Brisbane to Moree - Fly Corporate

### Wellcamp Airport, Toowoomba:

- Sydney to Toowoomba - Qantas
- Melbourne to Toowoomba - Airnorth
- Townsville to Toowoomba - Airnorth
- Cairns to Toowoomba - Airnorth



# Goondiwindi Regional Map





# Goondiwindi

## MUST-DOS:

- Explore a working Cotton Farm and be treated to a country morning tea with the Goondiwindi Cotton Tour
- Meet a local larrikin and learn about Gunsynd (the famous 'Goondiwindi Grey') during the Victoria Hotel Beer and Bulls\*\*t Tour
- Connect with nature and the world's oldest culture on a Bigambul Aboriginal Bush Tucker and Medicine Plant Tour
- Visit the charming Customs House Museum
- Stretch your legs on the River Walk beside the picturesque Macintyre River
- Picnic in the Botanic Gardens
- Enjoy many activities including water skiing at the Natural Heritage and Water Park
- Compete in the Hell of the West Triathlon

## MUST-SEES:

- The original 1914 Historic Border Bridge connecting NSW and Qld
- Have your photo taken with the famous 'Goondiwindi Grey' Statue
- Marvel at the restored Art Deco Cinema/Theatre
- Enjoy the sunset over the Macintyre River
- Experience the colour of Jacarandas in full bloom in late spring

Sitting peacefully on the banks of the Macintyre River at the junction of five major highways, Goondiwindi is a well-established border town. It is the perfect place for travellers to rest awhile and spend some time. With all you could want by way of amenities, an interesting history to explore, great food and warm country hospitality, it will be time well spent.

The great Macintyre River marks the Queensland/New South Wales border and creates a scenic backdrop for this friendly and prosperous country town.

You will find it is a vibrant, contemporary place with excellent facilities and amenities and its river frontage provides a unique and tranquil setting for one of Queensland's fastest growing rural communities.

Photographers often turn their lenses to the heritage buildings and country landscapes. In late spring you will see a breath-taking display as Jacaranda trees lining the streets burst into full purple bloom.

Home to around 6,000 locals and servicing approximately 15,000, its neat tree-lined streets, well maintained public buildings, sporting facilities and relaxed

town centre are a good measure of the community spirit and civic pride you will find here. That, naturally, extends to welcoming travellers to join in the activities, events and festivals and the local way of life.

You will find a range of accommodation here and once you are settled there is shopping, dining, and so much more to do around town and beyond.

Marshall and Herbert Streets offer a terrific range of shopping experiences. You will find everything from gifts and home wares to quality clothing stores.

Marshall Street is also eat street with many chic cafés where you can indulge in a good coffee, country-style cakes and baked goods as well as tasty light meals. The locals love to eat well and you will too!

On a self-guided walk around town, you will find the recently refurbished iconic Victoria Hotel, built in the era of Queen Victoria and then added to in the 1920s. The Victoria Hotel features some of the most outstanding architecture in Goondiwindi. Situated in the heart of the main street, you can't miss this old dame - a sturdy building of brick and timber, with a criss-cross of dark panelling and white lattice on its facades, stained glass windows and doorways, crowned by an ornamental (and slight off-kilter) tower. An eye-catching building indeed: a picturesque mix of victoriana and jazz age, with a dash of early colonial.

Be sure to drop by the Gunsynd Statue located near the original Border Bridge. It commemorates the famous 'Goondiwindi Grey' - a racehorse who was bought for a measly \$1300 by four partners (The Goondiwindi Syndicate) with the aim of







The Goondiwindi Grey



The Goondiwindi Grey



winning a local bush race. The Grey went on to win 29 races including the Cox Plate and the four big mile races: The Doncaster, The Epsom, The George Adams and The Toorak in one season. Needless to say, he won the hearts of punters in the late 60s and early 70s. At the new Civic Centre in Marshall Street, the Gunsynd Memorabilia Tribute displays photographs and information about this champion horse. You will find the Visitor Information Centre in the same building.

You will get a good feel for the local history with a visit to the Customs House Museum. A border customs point before federation, this authentically restored building and its magnificent cottage garden house a rich and colourful collection of mementos from yesteryear. Also in the grounds is Martha's Cottage, built in 1875.

Primary production and agribusiness are a vital part of the local economy. You can gain an appreciation for living on the land by joining Goondiwindi Cotton Tours' three-hour guided bus tour of Goondiwindi town, a cotton gin, a working cotton farm and discover the Goondiwindi Cotton fashion house.

Connect with the Bigambul people, the traditional owners of the local area, on a 3.5 hour guided tour of the Goondiwindi Town Common or Toobeah Reserve. Walk with local guides on an interactive Bush Tucker and Medicine Plant Tour to find and taste bush foods and learn about traditional remedies, hear stories that have been passed down for generations and enjoy billy tea and damper.

Connecting with nature is a precious part of life here. Bird watchers will find an amazing array of birdlife in the local area – pick up the special Birdwatchers brochure from the Visitor Information Centre.

There are many parks and gardens where you can relax and breathe the fresh country air. Pack a picnic and take your time enjoying the Botanic Gardens of the Western Woodlands.

Early birds can catch the Macintyre at her best on an early morning walk or at the other end of the day, it is magic on a sunset stroll. Enjoy water skiing and other water sports at the Natural Heritage and Water Park.

## Events

The social calendar is quite a busy one with many other not-to-be-missed events.

**Hell of the West:** In February there is the not for the faint-hearted, self-explanatory Hell of the West Triathlon.

**Easter on the MacIntyre** is becoming a popular weekend of events for visitors to experience real Goondiwindi hospitality.

**Gourmet In Gundy:** If you are visiting in September, make sure to time your stay to coincide with the cultural celebration that is Gourmet In Gundy. The annual festival features the best of local food, wine, art and music. The weekend is full of sporting and cultural events and is a true community get-together and a highlight of the cultural calendar.

**Bachelors and Spinsters Ball:** Also in September is a highlight of a different kind – a country kind no less – the Plucked Duck Bachelors and Spinsters Ball is a shindig you will only find in the country.

**Horse Racing:** Throughout the year, Goondiwindi hosts several Race meetings, which are a chance to mix it with the locals.

**Equestrian Events:** In August you can explore an extensive range of horse sporting competitions, including Polo, Polocrosse, Horse Racing, Show Jumping and Pony Clubs.

**Gundy 400:** August also hosts the muddy action of the Gundy 400 Off Road Races.

Current dates for all events are listed at [www.grc.qld.gov.au/events-calendar](http://www.grc.qld.gov.au/events-calendar).

## History

The name Goondiwindi comes from the Aboriginal word 'Goonawinna' which means 'The Resting Place of the Birds'. It would appear that this name was first given by the Aborigines to a spot near the present site of the Goondiwindi Hospital.

The explorer, Alan Cunningham, discovered the Macintyre River during an expedition in 1827. He named the river after Captain Peter Macintyre of Blairmore and Pitmacree on the Hunter River. The Macintyre family had provided Cunningham with horses and drays for the 1827 expedition.

Years before Goondiwindi existed, three grazing properties joined at a spot near where the town now stands. They were Callandoon, Umbercollie and Old Goondiwindi, all settled between 1838 and 1846. Food and mail for these remote unfenced runs came by bullock team from Maitland in New South Wales. Rather than return without a load, the teamsters would turn their bullocks out to graze and would take any jobs offering on the stations, until enough wool had been shorn in the district to provide them with back loading to Maitland.

The owners of the three properties allowed the teamsters to camp on the river, where the runs met. Gradually the tents and makeshift huts gave way to small cottages until by 1862, several people had settled permanently at the camping site. By the 1870s, the tiny settlement had acquired a store, courthouse, blacksmith shop, Chinese market garden, boarding house and even a private school.

For many years after the establishment of the town, there was no bridge over the river and goods or people coming from New South Wales were pulled over in a punt. A wooden bridge at Goondiwindi was constructed between the period 1875 and 1878. This bridge was replaced with the present structure in 1914.



# GOONDIWINDI







## Talwood

Talwood is 90 kilometres west of Goondiwindi and boasts a lawn and tree-lined main street which is a credit to its residents.

Talwood will surprise those who call in and have a look around. A small town with a whole lot of community spirit that has grown to service the surrounding rural industry including the new AWB grain transfer depot.

The Talwood Hotel is a pleasant place to stop and enjoy a meal or cool drink along with the traditional country town store, come post office, come coffee shop and cafe.

Caravan travellers are welcome in Talwood with the recreation reserve providing powered and unpowered sites close to the town centre and hotel.

While in the area visit the Boomi hot springs, 34 kilometres from Talwood.

The main feature of Talwood is fishing and camping and you have a choice of two rivers, the Macintyre or the Weir.

### Events

#### Talwood Picnic Races

The main event in Talwood is the Picnic Races held each August, a great day of racing and socialising that attracts people from all over Queensland and New South Wales.

#### Weengallon Pink Ladies Day

Each year 600 pink clad women flock to the event in their finery. Weengallon is 140 kilometres west of Goondiwindi, and each year this blink and you miss it town hosts a great charity ladies' day out. Around \$30,000 is raised each year with the majority of funds supporting the position of a local Breast Care Nurse and the Olive McMahon Lodge in Toowoomba.

#### Weengallon Campdraft

A great day out for families to be enjoyed by locals and visitors.

Current dates for all events listed at [www.grc.qld.gov.au/events-calendar](http://www.grc.qld.gov.au/events-calendar)

### History

This pastoral district, surveyed in the 1860s, became much more prominent within the then Waggamba Shire after the construction of the railway line from Goondiwindi to Dirranbandi. Talwood established as a service centre and community hub for the surrounding rural properties and remains a major depot for the huge quantities of grain harvested in the local area. The bitumen-sealed road from Goondiwindi to Talwood occurred in 1973, joining the existing bitumen highway from St George to Mungindi, known as the Carnarvon Highway from the Qld-NSW border to Roma.



### Events

**Toobeah Rodeo:** The very popular Toobeah Rodeo is held each June - check it out for a genuine country experience.

### History

Toobeah is an old railway town that is now the site of a grain depot for surrounding properties. Once a busy rural town, Toobeah had two hotels in its heyday.

Current dates for all events listed at [www.grc.qld.gov.au/events-calendar](http://www.grc.qld.gov.au/events-calendar)

## Toobeah

Toobeah, with its lovely gum trees growing either side of the highway, is just 49 kilometres west of Goondiwindi. This little town is set amid the cotton and grain-growing farmlands and known for its horse sports.

Tiny Toobeah, where various traffic roads meet, is simply described as a main street. The Coronation Hotel is hard to miss in Toobeah. The pub has a great play area at the back for the kids, a caravan park and accommodation is also available. Away from the pub, fishing and bird watching are the main activities.

The town is well worth a look and is a great place to stop on your journey for a stretch and rest. Chat to the locals, stop in for an old-fashioned counter meal at the Coronation Hotel or pick up supplies at the general store.



Old Bungunya Railway Station.

## Bungunya

Bungunya is a pretty village kept in top shape by the residents. The name Bungunya is allegedly an Aboriginal word meaning 'dry camp', indicating a high or safe living place.

This small town becomes a hive of activity during the wheat harvest. Bungunya also has a school that services the surrounding area.

Bungunya is located immediately north of the Macintyre River, which is the border between Queensland and New South Wales. The Weir River flows from east to west through the northern part of the locality. The land is very flat, approximately 180 metres above sea level, and is extensively developed for agriculture.

### Events

#### Annual Bun Run

The Bungunya State School Bun Run in Bungunya, Queensland is a 3 hour cross country race where you run as many laps as you can, take as many breaks as you need, and have as much fun as you can!

The multi-lap course utilises the oval of Bungunya State School and the adjacent natural bushland of the town common. There are many prizes, music, coffee, ice cream, BBQ and a last lap bar.

### History

Bungunya was established as a service centre and community hub for the surrounding agricultural properties.

Bungunya Provisional School opened on a half-time basis in 1916, sharing the teacher with Glengower Provisional School. It became a full-time school in 1918 and a State School soon after.

Bungunya was once a busy railway centre transporting thousands of bales of wool from local sheep stations. Like many other rural towns, the Bungunya railway station has closed due to improved transport services.

Current dates for all events listed at [www.grc.qld.gov.au/events-calendar](http://www.grc.qld.gov.au/events-calendar)





## Victoria Hotel

GOONDIWINDI

The iconic Victoria Hotel has been newly renovated and features the most outstanding architecture in Goondiwindi. Situated in the heart of the main street, it is an ideal place for a cold drink, a tasty meal or an overnight stay. Better still, stay for several days while you enjoy all the Goondiwindi region has to offer.

Features: Public Bar, Gunsynd Lounge, Function Rooms/Emu Bar, Lounge Bar, Pokie Machines, Austar, Keno, Bottleshop, Accommodation, Children friendly restaurant with kids play area, Designated smoking areas, Unisex/disabled toilet with baby change facility, Members draw – Tuesday/Friday/Saturday, jackpot each week.

The Victoria Hotel – come and enjoy our hospitality!

Accommodation | Bars and Gaming | Restaurants  
Function Rooms | Bottleshop | Victoria Hotel Tours

81 Marshall Street, Goondiwindi P: 07 4671 1007 E: vichotelgundy@gmail.com  
victoriahotelgoondiwindi.com.au



COFFEE MOST URBANITES WOULD DIE FOR, QUALITY WHOLESOME FOOD, COMBINED WITH MODERN CHIC CUISINE. ONE OF THE MOST POPULAR AND EXCITING PLACES TO EAT AT FOR LIGHT MEALS, BREAKFAST, MORNING AND AFTERNOON TEAS. LAURENZ OFFERS AN INVITING AND RELAXING ENVIRONMENT FOR YOU. WITH DELICIOUS GLUTEN AND DAIRY FREE MENU OPTIONS AVAILABLE, WE ARE  
**OPEN MON-FRI 7:30AM-4:30PM & SATURDAY 8AM-12NOON.**  
FEATURING PIAZZA DORO COFFEE (ONLY THE BEST!), DELIGHTFUL HOMEMADE CAKES AND SLICES. FIND US NEXT TO THE COMMONWEALTH BANK IN MARSHALL ST. WE LOOK FORWARD TO SEEING YOU!

**1/84 MARSHALL STREET**  
GOONDIWINDI Q 4390 | (07) 4671 5541

**OPEN:**  
**MON – FRI 5AM to 5PM**  
**SAT 5.30AM to 2PM**

Best Burgers in Town  
Hot Dogs • Kebabs • Hot Box Food  
FRESH Sandwiches/Wraps/Rolls/Salads  
ALL DAY Breakfast • Espresso Coffee  
Icy Cold Milkshakes • Thick-Thick Shakes  
Icecream Cones .. & so much more

**OK MILK BAR**  
Shop 1/5 McLean St Goondiwindi  
P 07 4671 1109

Mention  
this AD &  
receive \$2  
Discount

Great  
Friendly  
Service





# GOONDIWINDI TOP TOURIST PARK



Nothing tops a Top holiday.

Goondiwindi Top Tourist Park is a spacious park offering a comprehensive range of well equipped, modern cabin accommodation, boasting ensuite sites for those who enjoy the luxury of their own private bathroom, powered and unpowered sites available for caravanners and campers. We accommodate large caravans and motorhomes.

- 2 toilet blocks
- 2 x BBQ areas with outdoor table & gas BBQ
- Playground
- Billabong with jetty
- Heated swimming pool
- Fully equipped camp kitchen - 2 ovens, fridge, microwave, gas BBQ, TV
- 2nd Camp kitchen with fridge, microwave & oven
- Big Rig site
- BBQs, Kiosk, LPG, Ice
- Linen available for hire
- Dump point
- Stocked billabong
- Shady camp & sites on bank of billabong
- Restful and spacious
- Dogs by arrangement, outside only

CONDITIONS APPLY, PLEASE  
CHECK WHEN BOOKING



20 Hungerford Street | Goondiwindi | QLD 4390

Phone | (07) 4671 2566

## The RAILWAY HOTEL

For great old fashioned customer service and country pub charm you can't go past the Railway Hotel

With a drive thru bottle shop, 120 seat restaurant that serves the best meals in town, sports bar, Keno, TAB, gaming room and accommodation, The Railway has got it all. So drop in and have a beer with friends on the corner of Herbert and Sandhurst Streets, or call to make your dinner reservation on (07) 4671 1577 and speak with our friendly staff today. See you at The Raily!

69 Herbert Street, Goondiwindi Q 4390  
(07) 4671 1577 | railwayhotmot@bigpond.com



6 Herbert Street

## Goondiwindi Co-Op

OPEN 7 Days | Mon-Fri 7am to 9pm  
Sat-Sun 8am to 6pm

- Best selection of fruit & veg in town
- On-line shopping • Friendly staff
- Quality meats • We deliver
- Call back service
- Over 27,000 lines
- Front & rear of shop parking
- Open all public holidays except Christmas Day & Good Friday

P: 07 4677 7899  
[www.foodworks.com.au/Goondiwindi](http://www.foodworks.com.au/Goondiwindi)

*proudly owned by the people for the people*

## GDVS Goondiwindi & District VETERINARY SERVICES

### SMALL ANIMALS

Full range of services offered including:-

- Vaccinations, worming and flea treatment advice
- Desexings
- Full medical and surgical services
- Dentistry
- Diagnostics - x-ray, ultrasound & pathology
- Emergencies & accidents

### LARGE ANIMALS

We offer a full ambulatory service and on farm visits:

- Pregnancy testing - manual & ultrasound
- Bull Breeding Soundness Evaluations
- Reproduction and production advice
- Full beef cattle consulting service
- Calvings
- Routine & non-routine medicine & surgery

### EQUINE

- Geldings
- Dentistry
- Medical services
- Field surgical services
- Lameness evaluation - x-ray, ultrasound

### REPRODUCTION - DOGS, CATTLE & HORSES

- Artificial Insemination - Fresh, chilled and frozen
- Bull semen collection & straw production
- Stallion collection & chilled semen preparation
- Mare ultrasound scanning, pregnancy testing, caslicks

Phone: 0746 713 405 Fax: 0746 713 705  
Email: [admin@goondiwindivet.com.au](mailto:admin@goondiwindivet.com.au)  
Clinic address: 65 Russell Street, Goondiwindi QLD 4390

## Goondiwindi Cotton & Town Tours

A fabulous guided tour taking in farming, history, water and fashion of Goondiwindi...

Meet some local icons, experience our working Cotton Farm via the cotton gin and go places not open to the public. Learn some interesting facts & legends, followed by a visit to our spectacular Heritage Water Park. Finally, discover the Fashion House of Goondiwindi Cotton, where you will be treated to morning tea with traditional country hospitality.

Duration of tour: 3 1/2 hours starting at 9am - Monday to Saturday or on request.  
Cost of tour: \$40 per adult & \$20 per child. Pickups from local Caravan Parks & Information Centre

**For bookings or further information please call 0427 878 342.**  
Discover why Goondiwindi is one of Queensland's most successful country towns and find out for yourself why Goondiwindi was voted the most friendliest town!





# Welcome to GOONDIWINDI HOLIDAY PARK

36 Old Cunningham Highway, Goondiwindi  
Free Call: 1300 725 915 | P: 07 4671 2900  
E: [goondiwindi@southerncrossparks.com.au](mailto:goondiwindi@southerncrossparks.com.au)  
[www.goondiwindiholidaypark.com.au](http://www.goondiwindiholidaypark.com.au)



- Range of 1 & 2 bedroom cabins
- Ensuite amenities
- Full range of accommodation, camping & caravan sites
- Immaculate & spacious 13-acre site
- Drive through powered sites
- Pet friendly
- Artesian pool & spa
- Free wireless internet
- Outdoor camp kitchen & free BBQs
- Gas refills
- Guest coin operated laundry
- Dump point
- Damper & Billy Tea evenings every Monday, Wednesday & Friday during June, July & August
- North eastern side of Goondiwindi, only 2.5km from town centre
- Business travellers, holidaymakers & tourists all welcome

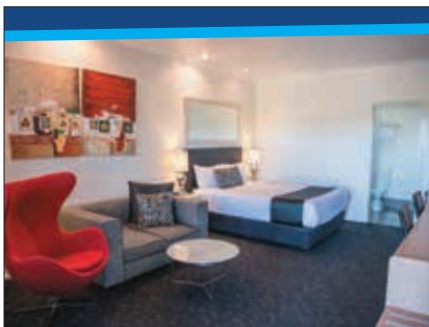


## LUCKY THAI RESTAURANT

47 Marshall Street Goondiwindi Q 4390  
P 07 4671 4939  
M 0437 648 053 or 0428 299 549  
E [info@luckythai.com.au](mailto:info@luckythai.com.au)  
[www.luckythai.com.au](http://www.luckythai.com.au)

Goondiwindi's **newest** fully licensed restaurant  
George & Pat welcome you to experience the excellent Thai food prepared by **Thai Chefs**  
Relaxed dining atmosphere in the **Thai themed 58 chair restaurant** stocking popular wines, spirits, beers, cocktails and mocktails  
**Takeaway, lunch and dinner** available, serviced by friendly, efficient wait staff – **takeaway meal deliveries** available within the town area (delivery fee \$5.00)  
Conveniently located in the **main street** opposite The Royal Hotel

LUNCH 11:30am–2:30pm  
DINNER 4:30pm–9:30pm  
CLOSED MONDAY



### Ascot Lodge Motor Inn & Cascades Licensed Restaurant

- 25 x 4 star AAA-rated executive-style rooms (studio, family and accessible rooms)
- Licensed restaurant open to the public 7 days per week for breakfast and dinner
- Free undercover car parking and space available for trailers, etc.
- Free Wi-Fi and Foxtel
- Pool and guest laundry



2 Phar Lap Court, Goondiwindi Q 4390  
T: 07 4671 5566 F: 07 4671 5577  
E: [ascotlodge@bestwestern.com.au](mailto:ascotlodge@bestwestern.com.au)  
[www.bestwestern.com.au/ascotlodge](http://www.bestwestern.com.au/ascotlodge)



## Goondiwindi Tyre Service

Stocking all the leading Tyre Brands  
Goodyear, Dunlop, Michelin, Yokohama, BF Goodrich  
Exide & AC Delco Batteries  
Engel & Waeco Fridge/Freezers  
We also carry out Wheel Alignments

51 Winton Street | Goondiwindi Q 4390  
P: 0746 712 577 | F: 0746 712 279  
[www.goondiwindityres.com.au](http://www.goondiwindityres.com.au)



28 Marshall Street  
Goondiwindi Q 4390  
P: 07 4671 3641  
E: [sales@gdicomms.com.au](mailto:sales@gdicomms.com.au)  
[www.gdicomms.com.au](http://www.gdicomms.com.au)



### Providing Sales & Service to Goondiwindi and surrounding areas for:

- Reversing Cameras
- VAST Satellite TV Systems
- UHF Radios
- Satellite Phones
- Phone Kits
- Mobile Internet
- General Electronic Repairs



[www.gdicomms.com.au](http://www.gdicomms.com.au)

## THE TOWN HOUSE MOTOR INN & RESTAURANT

THE TOWN HOUSE MOTOR INN & RESTAURANT PRIDES ITSELF AS A PREMIUM ACCOMMODATION AND DINING DESTINATION IN GOONDIWINDI.

OFFERING A GREAT QUALITY MOTEL AND RESTAURANT IN THE CENTRE OF GOONDIWINDI, THE TOWN HOUSE IS THE TRAVELLER'S FIRST CHOICE.

WE ARE PROUD TO BE THE ONLY MOTEL IN GOONDIWINDI TO OFFER KING SIZED BEDS TO OUR TRAVELLING GUESTS.

WHETHER YOU'RE A LOCAL WITH AN APPRECIATION FOR GREAT FOOD, OR VISITING GOONDIWINDI ON BUSINESS OR LEISURE, YOU'LL FALL IN LOVE WITH THE TOWN HOUSE.



110 MARSHALL STREET, GOONDIWINDI Q 4390  
P: 07 4671 1855 ★ F: 07 4671 2918  
E: [manager@thetownhouse.net.au](mailto:manager@thetownhouse.net.au)  
[WWW.THETOWNHOUSE.NET.AU](http://WWW.THETOWNHOUSE.NET.AU)

## CUSTOMS HOUSE MUSEUM No. 1 McLean Street, Goondiwindi



The main building of the museum is the Heritage-listed Customs House which was used by Customs Officers for the collection of Customs Duties on interstate trading and for the control of smuggling until 1901. The Museum, which was opened in 1975, has interesting displays of local history and memorabilia which recall the establishment and settlement of Goondiwindi.

MUSEUM OPEN | 9.00am to 1.00pm  
Monday, Tuesday, Friday, & Saturday  
ADMISSION | Adults \$5; Concession \$3; Children \$2; Family \$10  
P: 07 4671 3041 | Secretary: 0428 764 377  
E: [secretary@gdicustomhouse.com.au](mailto:secretary@gdicustomhouse.com.au)



## THE ROYAL HOTEL

48 MARSHALL ST, GOONDIWINDI  
☎ 07 4671 1877 WWW.OSHEASROYAL.COM

EAT — DRINK — EVENTS



Goondiwindi Cinema and Theatre

### Goondiwindi Cinema and Theatre

Originally built in 1937 the Goondiwindi Cinema and Theatre showcases the beauty of art deco. The Goondiwindi Cinema and Theatre offers the best for your entertainment experience.

- Available for private hire, functions and birthdays
- Discounts for bulk bookings
- Gift Cards
- Membership

07 4671 0365  
E: [enquiries@goondiwindicinema.com.au](mailto:enquiries@goondiwindicinema.com.au)  
92 Marshall Street, Goondiwindi QLD 4390

FREE Wi Fi



Enjoy data free in  
the main streets of  
Goondiwindi, Inglewood  
and Texas when you visit.

### Bush Tucker & Medicine Plant Tours

Taste, Feel & Identify

Come and experience an authentic Aboriginal Bush Tucker & Medicine Plant Tour today. Join Cheryl Moggs an expert on Aboriginal knowledge and uses of native plants.

[www.cre8tivemix.com.au](http://www.cre8tivemix.com.au)  
0429 037 732  
E: [Cheryl@cre8tivemix.com.au](mailto:Cheryl@cre8tivemix.com.au)



### Dental On Bowen

With Dr Jenna Childs, Dr Olivia Vonow,  
Dr Samantha Messmer & Dr Shivani Rattan

- Emergency Care/Service Available
- Cosmetic Dentistry
- General Dentistry
- Dental Crowns & Bridges
- Dental Implants
- Wisdom Teeth Removal
- Custom Mouth Guards
- Endodontics (Root Canal Therapy)
- Opening hours: Mon-Thurs 8.00am - 4.00pm & Fri 8.00am - 1.00pm

[dentalonbowen.com.au](http://dentalonbowen.com.au)  
07 4671 1806  
E: [reception@dentalonbowen.com.au](mailto:reception@dentalonbowen.com.au)  
24 Bowen Street, Goondiwindi QLD 4390



## Goat Rock Camping Ground & Tourist Park

- Unpowered sites
- BBQ & Picnic facilities
- Events throughout the year
- Pet friendly
- Farm animals
- Day visitors welcome

Bush camping at its best!

16km south of  
Texas QLD  
Amanda - 0437 713 488  
[info@goatrock.com.au](mailto:info@goatrock.com.au)  
[www.goatrock.com.au](http://www.goatrock.com.au)

Find us on  
Facebook



## TEXAS HERITAGE CENTRE & TOBACCO MUSEUM



Texas of yesteryear

OPEN Saturday 9.30am-1pm  
or by appointment

- \* Mini Shearing Shed, Gaol & Stocks
- \* Smithy & Post Office
- \* Over 2000 catalogued items
- \* Local family histories
- \* Housed in historic Police House c.1890



Cnr Flemming & Moore St, TEXAS, QLD

Garth - 07 4653 1392  
John & Barb - 07 4653 0186  
Tony - 0419 264 174

Email: [texasheritagecentre@gmail.com](mailto:texasheritagecentre@gmail.com)  
Web: [texasheritagecentre.weebly.com](http://texasheritagecentre.weebly.com)

### Spar Express Texas

Our shop is open 7 days a week:

- 7am to 6pm Monday to Friday
- 7am to 1pm Saturday and Sunday

We sell BBQ chickens, we bake fresh bread, pies and pastries every day. Fresh fruit, veg and groceries.

[spar.com.au](http://spar.com.au)  
07 4653 0757  
2-4 High Street, Texas QLD 4385



### Texas Van Park

Clean amenities; Friendly hosts; S/C cabins;  
Powered and unpowered sites; Public laundry;  
Gas refills; Pet friendly; Come and enjoy our birdlife.

When in Texas why not come in and check us out and stay a while - you will not be disappointed.

[texasvanpark.com.au](http://texasvanpark.com.au)  
07 4653 1194  
E: [texasvanpark8@bigpond.com](mailto:texasvanpark8@bigpond.com)  
2 Avon Street, Texas QLD 4385



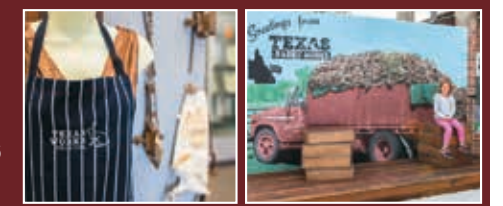
• A TRULY UNIQUE VISITOR EXPERIENCE •



### TEXAS RABBIT WORKS

Built in 1928 the Texas Rabbit Works is the last rabbit processing works remaining in Australia. This largely intact example of the struggle to control the rabbit plague and the industry that developed as a result is a **must-see** on your visit to Texas.

For enquiries  
contact Texas  
Qld Inc. on:  
**0448 762 016**





# Inglewood

## MUST-DOS:

- Experience lakeside camping at Lake Coolmunda
- Sample some local produce
- Enjoy bushwalking and check out the many species of birds
- Visit the award winning Lavender Farm
- Mingle with the locals and enjoy the hospitality at the Golf Club and Bowls Club

## MUST-SEES:

- Learn about the local history at the Australian Tobacco Museum
- Taste the local olives at the Olive Factory
- Relax and unwind in the beautiful parks
- See and smell the amazing wildflowers

Midway between Goondiwindi and Warwick on the Cunningham Highway, you will find Inglewood, sitting on the banks of the serene Macintyre Brook.

This friendly country town blessed with fertile agricultural lands is home to just over 1,000 residents. Once a significant tobacco growing area, these days the focus is on sheep and cattle grazing, timber milling and the farming of fodder, grains and horticulture crops. While you are in town sample some local produce including olives, high quality honey, organic chicken and beef.

Take in the perfume at the award winning Leven K Lavender Farm and sample some of the essential oils and other products. You can also tour an olive grove and find out all the processes from picking to the finished product. Don't forget to call ahead and organise a lunch and BYO a vino to enjoy.

The driver reviver station is located in the popular Lions Park with all facilities and many play activities for the children. Enjoy a walk on the sealed walkways along the riverbank into the central business area where you can explore an interesting range of local shops. If you are visiting in summer take a break from the heat and enjoy a swim in the local pool or for something more natural, one of the many local waterways.

The area is renowned for its natural beauty and one of the best ways to explore is on a local tourist drive. Drop into the Visitor Information Centre in Albert Street for maps of the local attractions. If you are visiting in late winter or early spring, you will see and smell the beautiful wildflowers that dot the countryside.

Coolmunda Dam is 13 kilometres east of Inglewood on the Cunningham Highway

with lakeside camping and caravan accommodation. Enjoy fishing, canoeing, sailing or water skiing on the 1,740 hectare lake. The waterways are a magnet to a huge variety of birdlife including colourful grass parrots, wrens, raptors, numerous water birds and waders and the rare regent honeyeater. Keep an eye out for the unique Inglewood wattle and native cypress. You may even spot a platypus in a quiet stream.

Don't forget to call in at the Inglewood Heritage Centre and view the Australian Tobacco Museum display including a full size replica of a drying barn. The museum also houses written and pictorial records of Inglewood and the surrounding district from settlement.

Spend a few days here and relax, reconnect with nature and enjoy the country lifestyle.

## Events

**Trail Bike Ride:** Inglewood State School host their annual Trail Bike Ride in April with hundreds of participants of all ages and ability testing their skills on the local bush tracks.

**Show and Shine** is a great event for car enthusiasts held in Inglewood every September.

**Groovin in the Grove:** Taste local olives and other produce, relax to the sounds of quality music and browse through the many stalls at Groovin in the Grove in September bi-annually.

**Lake Coolmunda Fishing Competition** is a chance to wet a line and enjoy some of the best fishing in southern Queensland - October annually.

Current dates for all events are listed at [www.grc.qld.gov.au/events-calendar](http://www.grc.qld.gov.au/events-calendar).

## History

Allan Cunningham passed through to the east of Inglewood in 1827 on his exploration of inland Queensland. Pastoral holdings were established in the mid 1840s; sheep and cattle were driven overland from the south to stock the holdings.

Cypress pine and hardwood were abundant which provided material for building the community and later became an important industry for the district. In the 1890s tobacco became a huge economic boost to Inglewood and with a large influx of European migrants (mostly Italian) after WWII the industry flourished.

The Railway reached Inglewood in 1906 establishing important transport links to Brisbane. The Warwick Co-Op Butter Factory was built near the railway station to process milk supplied by the local dairy farmers. The Butter Factory also supplied electricity for the town of Inglewood until the closure in 1960.

Coolmunda Dam was completed in 1968 and the 1,740 hectare dam provides water for the town of Inglewood and established a variety of irrigated crops in the surrounding district.

Just east of Inglewood on the Cunningham Highway, Lake Coolmunda is ideal for fishing, camping, water skiing or other water activities.

Camp or park your van in the beautiful surrounds and enjoy a real back-to-nature experience.

It is pet friendly and offers picnic tables, barbeques, a camp kitchen and good quality amenities.

For bookings contact Lake Coolmunda Caravan Park on 07 4652 4171.

## LAKE COOLMUNDA CAMPING AREA





## LEGEND

- |                        |                              |
|------------------------|------------------------------|
| 1 Golf Club            | 8 Hospital                   |
| 2 Sporting Complex     | 9 Police                     |
| 3 Spurr H Caravan Park | 10 Show Grounds              |
| 4 Civic Centre & VIC   | 11 Aerodrome                 |
| 5 Bowls Club           | 12 Swimming Pool             |
| 6 Apex/Lions Park      | 13 Australian Tobacco Museum |
| 7 Olive Grove          |                              |

## Texas

### MUST-DOS:

- Catch a Murray cod in the beautiful Dumaresq River
- Explore the unique Texas Rabbit Works
- Enjoy the annual Texas Country Music Roundup
- Experience a genuine country race meeting
- Play a round of golf on one of Queensland's best 'sand green' courses

### MUST-SEES:

- Experience sensational sunsets
- Visit the Texas Historical Precinct including the Historical Museum, Rail Museum and Rabbit Works
- Check out the fabulous exhibits at the Texas Regional Art Gallery
- Climb Goat Rock and enjoy the magnificent views
- Get your bearings and view the town and local landmarks from Beacon Lookout



Prime Cattle near Texas



Within an easy drive east of Goondiwindi is the town of Texas, perched on the banks of the picturesque Dumaresq River. You will find excellent fishing and great camping spots in the serenity of rural landscapes.

The Dumaresq River winds through gentle hills and is crossed by the historic weirs of Bonshaw, Cunningham and Glenarbon making the Texas area great for fishing, canoeing, four-wheel driving, hiking and camping.

Recognised as one of the top RV Friendly communities in Australia the town has put a lot of effort into making tourists welcome. Texas is also the first official Motor Cycle Friendly Town in Australia with many interesting trails for all types of bikes and rider experience. Drop in and see the friendly locals at the Visitor Information Centre in High Street to collect some brochures or download maps of suitable routes at [www.grc.qld.gov.au/texas-motorcycle-routes](http://www.grc.qld.gov.au/texas-motorcycle-routes).

The Texas Cultural Centre and Regional Art Gallery is a must see with regular touring and local exhibitions as well as an outstanding photographic display of the 2011 floods.

Farming of sheep and cattle is the dominant industry today, with fodder, cotton and horticultural crops adding to the mix. Texas is also home to the largest cattle feedlot in Australia and a silver mine situated in the historic Silver Spur mining area.

The fertile river flats are dotted with old tobacco barns as a reminder of the town's farming history. To learn more about the tobacco industry and more of the area's rich past, visit the Texas Heritage and Tobacco Museum housed in restored local historic buildings. Nearby you will find the restored Texas Rabbit Works, a step back in time to a forgotten era of Australian history when rabbit plagues threatened the existence of rural communities. Believed to be the only rabbit processing works remaining in Australia this is a unique example of true country ingenuity where communities created a thriving economy from an environmental problem.

To the east of Texas, you will find the spectacular Glenlyon Dam offering some of the best inland fishing and water activities in southern Queensland. Nearby the Sundown National Park is a brilliant bush walking and bird watching destination.

Events

**Texas Country Music Roundup:** Each September the Texas Country Music Roundup brings together performers, bush poets and gospel singers for a weeklong celebration of country music.

**Texas Cup:** The Texas Cup Race meeting every December is the other major event on the local calendar and is becoming very popular with visitors keen to experience the genuine bush racing and friendly hospitality.

Current dates for all events listed at [www.grc.qld.gov.au/events-calendar](http://www.grc.qld.gov.au/events-calendar).

History

The McDougall Brothers originally settled on the land around Texas in 1840. Texas was named over a disputed land claim in the 1850s, which bore many similarities to one happening at the same time in the Republic of Texas and Mexico in the United States.

The town was established on the river flats in 1875 and relocated to the current site after disastrous floods of 1890 and 1921. Some buildings remain on the site of the original town.

The original settlers used the land for cattle with some cropping such as corn and by the late 1860s Chinese workers began to grow tobacco. The tobacco industry expanded rapidly on the fertile river flats and was a major crop until the latter part of the 1900s.

The nearby mining settlement of Silver Spur was established in 1893 however, the silver extraction became unprofitable and the original mine closed in 1913.

From the 1920s through to the 1940s a rabbit plague crippled farms across Australia, and Queensland was one of the hardest hit states. Where some saw disaster, the residents of Texas saw opportunity. A vibrant local industry based on trapping and processing rabbits for meat and skins enriched and enabled Texas to prosper. Construction of the Rabbit Works including the associated Freezing Works commenced in 1928 and was completed in 1932. Although the operations continued in various degrees until 1992, the vibrant industry declined from the 1950s. The Texas Rabbit Works, now restored, is the only remaining processing works in Australia.



Texas Memorial Hall



LEGEND

- |   |                       |    |                          |
|---|-----------------------|----|--------------------------|
| 1 | Caravan Park          | 8  | Bowls Club               |
| 2 | Show Grounds          | 9  | Golf Club                |
| 3 | Hospital              | 10 | Museum                   |
| 4 | Police                | 11 | Rabbit Works             |
| 5 | Art Gallery & Library | 12 | Sporting Complex         |
| 6 | Swimming Pool         | 13 | Public Toilets (High St) |
| 7 | All Abilities Park    |    |                          |



# Yelarbon

## MUST-DOS:

- Stretch your legs on Desert Jewels Biodiversity Walk featuring a variety of habitats
- Take the scenic route to Goondiwindi via the Border Rivers Tourist Drive
- Check out the unique wildlife including reptiles, marsupials and bird species

## MUST-SEES:

- Relax beside the Yelarbon Lagoon and feed the black swans
- See if you can identify the many seasonal crops growing in the area

Yelarbon Lagoon

Midway between Goondiwindi and Inglewood on the Cunningham Highway, you will find the tiny town of Yelarbon. The geologically distinct landscape of desert and spinifex country is characterised by a natural salinity scald.

This naturally hostile environment results in some unique vegetation and wildlife. Stretch your legs and enjoy the Desert Jewels Biodiversity Walk that has educational signage to identify the variety of vegetation and wildlife including reptiles, marsupials and birdlife. The 500-metre walk is easily accessible from town and suitable for all fitness levels.

If you are looking for somewhere to take a break, the Yelarbon Lagoon is a restful spot with a well-maintained picnic area and plenty of shade. You can feed the black swans that were relocated to the lagoon by Wildlife Rescue. Better still, stay overnight at the Recreation Reserve with low cost camping and caravan accommodation. Facilities including powered sites and toilets and showers in the restored railway station building are available at the reserve that is a short walk to the hotel and shops. The original Yelarbon Jail converted to the local museum is also located at the Recreation Reserve.

Get off the highway and take advantage of Border Rivers Tourist Drive, an alternate route following the river from Yelarbon to Goondiwindi to the west or Yelarbon to Texas to the east. This is a sealed road with access to some good fishing spots to wet a line. In season, you will see cotton and wheat crops in paddocks beside the road.

## History

Yelarbon was established as a commercial centre for the local sheep grazing and grain properties. Yelarbon in the local Bigambul language means 'water lilies growing in a lagoon'. The permanent water source at the lagoon was the reason for the town's location. The town is a collection depot for wheat and the establishment of rail connection in 1908 created important transport links to Brisbane for freight and passenger services.

The Dingo Barrier Fence stretching 8,320 kilometres from South Australia to Queensland terminated at Yelarbon. An old strainer post remains, marking the end of this fence that was the longest fence in the world.



Yelarbon Hall



# Camping

The Goondiwindi Regional Council recognises that the caravanning and camping industry in Australia is vast and significant to the nation’s economy.

Located at the crossroads of five State and National highways, Goondiwindi region is highly regarded as a stopover destination for longer road trips.

In order to accommodate the demand for different options for camping and caravan sites, Goondiwindi offers the following infrastructure within the region.

	ADDRESS	HOW TO GET THERE/ DESCRIPTION
CARAVAN PARKS		
Goondiwindi Holiday Park	36 Old Cunningham Hwy, Goondiwindi Ph: 1300 725 915	Goondiwindi Holiday Park welcomes travellers to our immaculate and spacious 13-acre site. Catering for a full range of accommodation options from the basic tent sites to large motorhomes, and fully self-contained accommodation. There is no need to worry about what to do with the family pet. Your pet dog is always welcome as our guest here at Goondiwindi Holiday Park.
Goondiwindi Tourist Park	20 Hungerford Street, Goondiwindi Ph: 07 4671 2566	Enjoy 10 acres of spacious parkland. Secure, clean & relaxed with a heated pool. Hand feed our ducks & possums at our attractive billabong. May-Sept Camp Fire Meals and Saturday pancake breakfast. Personalised & friendly. Wireless internet. This park is a part of the Australia-Wide Top Tourist Parks Network.
Goondiwindi Showgrounds	Boundary Road, Goondiwindi Ph: 0437 809 415	Great stop to pull up, with so much space. Very clean amenities, power boxes, sullage and private dump point onsite. Mostly grassed sites with plenty of room for drive through and large rigs. Close to town with friendly onsite caretaker. Represents great value for money.
Rivergums Caravan Park	1-5 DeLacy Street, Goondiwindi Ph: 07 4671 1383	Rivergums Caravan Park is the only park in the centre of the town of Goondiwindi and is less than 50 metres away from the pleasant Macintyre River. A quiet relaxed family park, set in an idyllic residential area. We are a 5-10 minute stroll along the river walkway to tourist attractions, local shops, pubs, cafes, restaurants and supermarkets.
Lake Coolmunda Caravan Park/Camping Grounds	Lake Coolmunda, Inglewood Ph: 07 4652 4171	Lake Coolmunda Caravan Parks QLD - All water sports including skiing, parafling, sailing, canoeing and fishing. Enjoy bird-watching, hiking, lovely sunrise and sunset. Our park has a swimming pool, tennis court, BBQ, camp oven fire, fire drum, camp kitchen, full amenity block. Camping areas with fire drums and BBQ. The Park is located 13km east of Inglewood, just off the Cunningham Highway.
Spur- H Caravan Park	77 George Street, Inglewood Ph: 07 4652 1407	There are 28 powered and 4 unpowered sites available for caravans, campers and motorhomes. On site accommodation is also available.
Texas Van Park	2 Avon Street, Texas Ph: 07 4653 1194	It's a small park, facilities are basic and clean, the people are friendly and it isn't expensive. What's not to like!
COMMUNITY MANAGED FACILITIES		
Talwood Recreation Grounds	Recreation Street, North Talwood	Talwood is 91km West of Goondiwindi, just off the Barwon Highway. From Main Street turn down Railway Street near the Post Office. At the end keep right and the camping area is on the left.
Yelarbon Recreation Grounds	Wyemo Street, Yelarbon	Yelarbon is 41km South West of Inglewood on the Cunningham Highway. Turn from the Highway down Wyemo Street opposite the Silos. Located on the beautiful lagoon, the very popular spot has hot showers, toilets and powered sites.

## CAMPING RESERVES

Redmond Park	Anderson Street, Goondiwindi	Take the Marshall Street/Goondiwindi Town exit from the large roundabout on the Cunningham Highway at Goondiwindi, and then turn left onto Anderson Street.
Rainbow Reserve	Kildonan Road, Kurumbul	At the Cunningham Highway roundabout in Goondiwindi, take the Kildonan Road exit to Yelarbon. 17km from the roundabout turn right just before the turnoff onto Eukabilla Road. Definitely dry weather only. There is a dirt boat ramp and a great spot for fishing and swimming.
Yellowbank Reserve	Kildonan Road, Yelarbon	At the Cunningham Highway roundabout in Goondiwindi, take the Kildonan Road exit to Yelarbon then at 25.3km from the roundabout turn right into the access road. Definitely dry weather only. Great for fishing and camping.
Lees Reserve	Kildonan Road, Yelarbon	At the Cunningham Highway roundabout in Goondiwindi, take the Kildonan Road exit to Yelarbon then at 29.6km from the roundabout turn right into the access road to the river. Definitely dry weather only. There is a rock bar across the river that forms a perfect fishing and swimming spot.
Bengalla Reserve	Kildonan Road, Yelarbon	At the Cunningham Highway roundabout in Goondiwindi, take the Kildonan Road exit to Yelarbon then at 32.6km from the roundabout turn right onto the access road to the river. Definitely dry weather only. Large reserve with plenty of room. You can get down close to the river for fishing and camping.
Whetstone Pocket	Cunningham Highway, Whetstone	Located on the Cunningham Highway, 26kms NE of Yelarbon, and 13km SW of Inglewood. This is a rest stop on the highway, with bitumen, and a shady area.
Inglewood RV stop	Alice Street, Inglewood	The Inglewood RV area is adjacent to the bridge at the eastern end of town. At the town end of the bridge turn into Alice Street and then right into the grassed area. Definitely dry weather only.
Texas Dumaresq River Rest Area	Dumaresq Crossing Road	2km south of Texas, turn off the Texas Road before the Dumaresq River bridge. Good grassy sites are in abundance in addition to shallow, clear water in the stony bottom river. Toward the bridge are deeper holes for fishing.

# Fishing

The Goondiwindi Region is regarded as one of the best fresh water fishing areas in Queensland with Golden Perch (Yellow belly), Jew, Brim and huge Murray Cod among the species caught in the local waterways.

The beautiful Macintyre and Dumaresq rivers, Macintyre Brook, Lake Coolmunda and Glen Lyon Dam are some of the many options for anglers to enjoy.

Remember to abide with the regulations regarding licensing, bag limits and restricted seasons for fishing in both Queensland and New South Wales when in our region. For information visit:

[www.daf.qld.gov.au/fisheries/recreational/rules-regulations](http://www.daf.qld.gov.au/fisheries/recreational/rules-regulations) or [www.dpi.nsw.gov.au/fishing/recreational/recreational-fishing-fee](http://www.dpi.nsw.gov.au/fishing/recreational/recreational-fishing-fee)



# Agriculture

Goondiwindi is the commercial hub of a vast agricultural and pastoral sector extending along the southern Queensland border.



Cotton Harvest



Precious Water

Originally an area of large sheep and grain properties, the Goondiwindi Region's early development was based around wool and wheat production. The region was also one of the major tobacco producers until the late 1970s. Reminders of this agricultural history can be seen today with large shearing sheds and old tobacco drying barns prominent features in the rural landscape.

The agricultural sector has expanded and currently the region's prosperity is based on a diversified agricultural and pastoral sector that produces some of Australia's best wheat, beef cattle, wool and cotton for domestic and overseas markets. Other commodities produced include oats, barley, sorghum, chickpeas and soybeans, meat sheep, pigs, chickens and dairy.

In a good year the region is one of the most productive in Australia. The fertile soils of the river valleys and floodplains ensure that there is a continuing strong demand for rural properties and enterprises.

Driving through the region, you will notice large fields filled with seasonal crops - the 'In Season Calendar' will help to identify the crops.

Intensive livestock industries are a growing part of the local economy and the Goondiwindi Region is home to several large-scale cattle feedlots and piggeries.

Irrigated agriculture is a major contributor to the economy, with over \$200 million of farm gate production in a good year. This provides some 800 jobs on farms, and a further 2,000 jobs in associated service industries. Each \$1 of farm gate production generates a further \$6 of economic activity in the wider community.



Wheat Harvest

Month	Lamb	Beef
January		
February		
March		
April		
May		
June		
July		
August	Lambing	Calving
September	Lambing	Calving
October	Lambing	Calving
November		
December		



Month	Cotton	Winter Cereals (Wheat/Barley/Chickpea)	Summer Cereals (Sorghum)	Olives	Nuts	Citrus	Stone Fruit	Broccoli	Lavender	Pumpkin
January	Watering		Harvest				Picking		In flower	
February	Watering		Harvest		Harvest		Picking		In flower	
March	Watering		Harvest		Harvest		Picking	Planting	Pruning	
April	Watering							Planting	Pruning	Picking
May	Picking/Ginning	Planting		Harvest		Harvest				Picking
June	Picking/Ginning	Planting		Harvest		Harvest		Picking		
July	Ginning					Harvest		Picking		
August						Harvest				
September			Planting			Harvest				
October	Planting	Harvest	Planting			Harvest				Planting
November	Planting	Harvest	Planting				Picking		In flower	Planting
December	Watering						Picking		In flower	Planting



