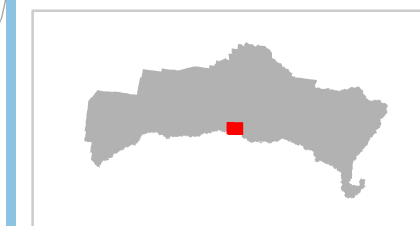


### Goondiwindi

- Existing trunk network - road
- Existing trunk network - shoulder and footpaths (State Controlled Road)
- Service Catchment
- Cadastral boundary
- Local government boundary
- Waterway



22/03/2018

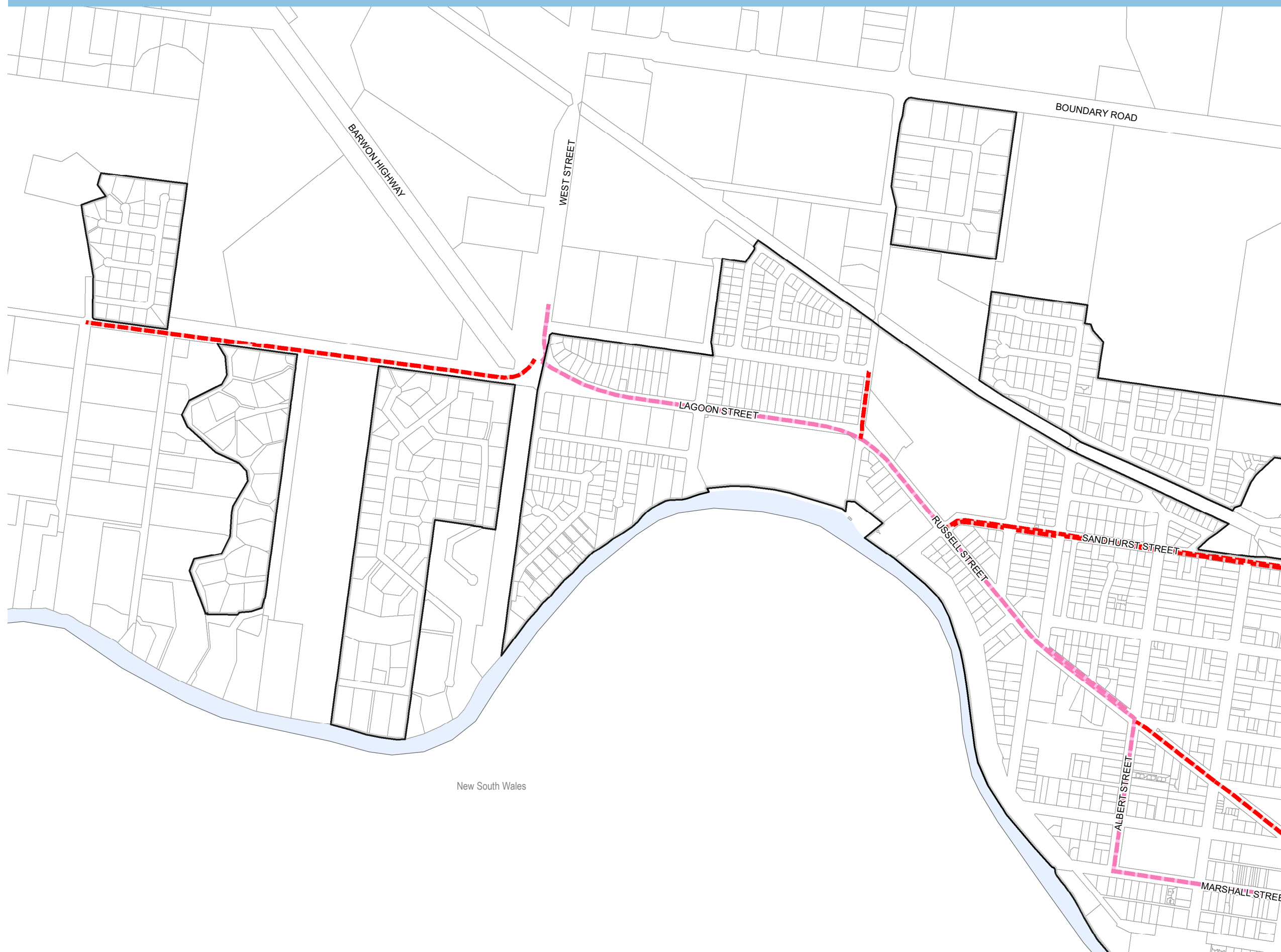
GDA 94 Zone 56

Data Source: QGIS & Nearmap 2017

0 0.5 1 km  
1:26,000

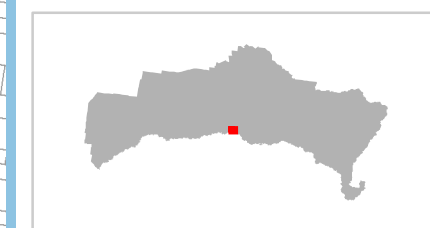
**Disclaimer**  
This product is for informational purposes and may not have been prepared for, or be suitable for legal, engineering, or surveying purposes. The map layers displayed are compiled from various sources. Therefore, no warranty is given relation to the data displayed on this map (including accuracy, reliability, completeness, currency or suitability) and accepts no liability (including without limitation, liability in negligence) for any loss, damage or costs (including consequential damage) relating to any use of the data.





### Goondiwindi (west)

- Existing trunk network - road
- Existing trunk network - shoulder and footpaths (State Controlled Road)
- Service Catchment
- Cadastral boundary
- Local government boundary
- Waterway



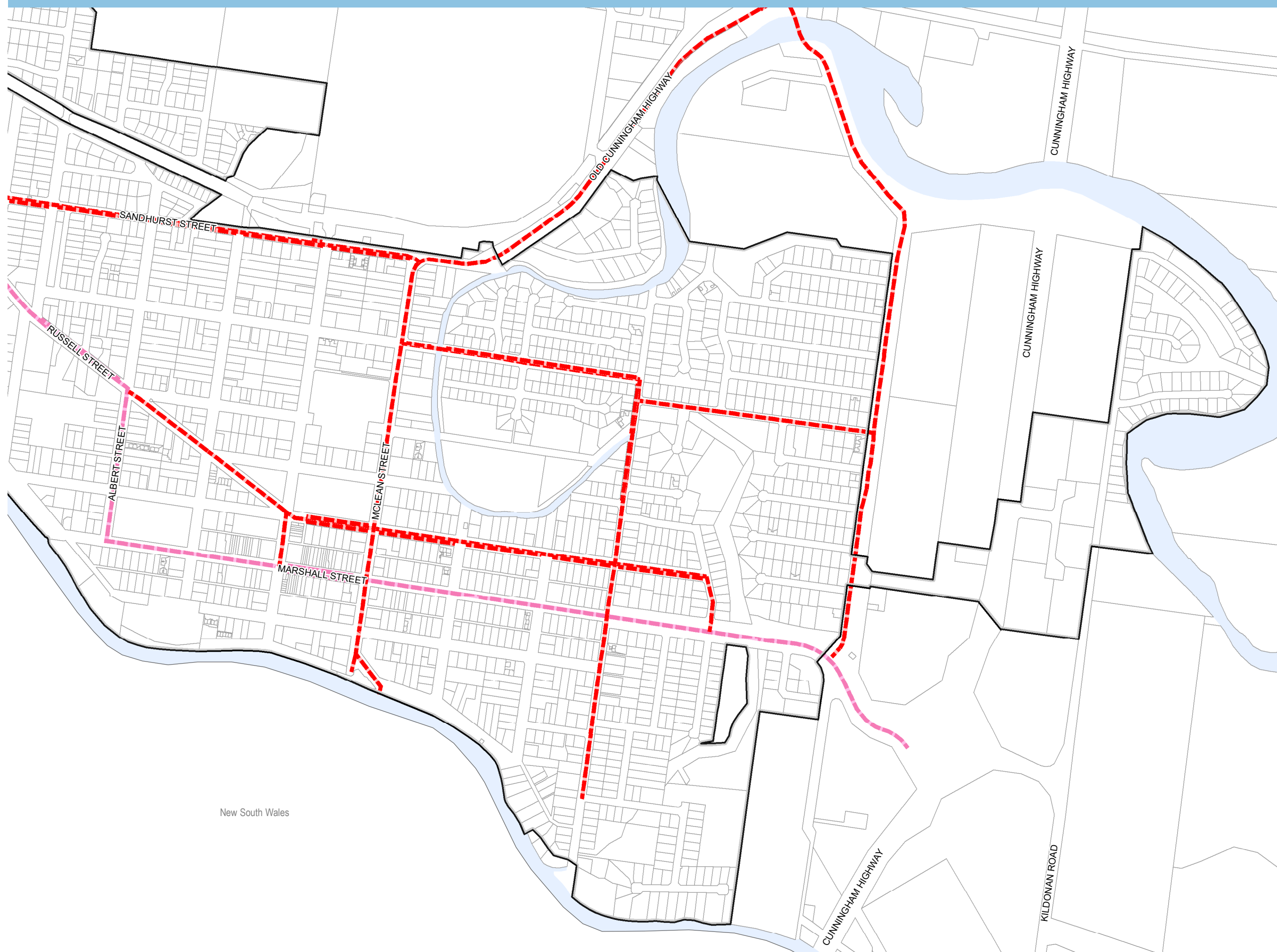
22/03/2018

GDA 94 Zone 56

Data Source: QGIS & Nearmap 2017

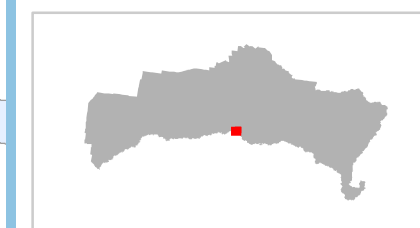
0 0.225 0.45  
1:10,000 km

**Disclaimer**  
This product is for informational purposes and may not have been prepared for, or be suitable for legal, engineering, or surveying purposes. The map layers displayed are compiled from various sources. Therefore, no warranty is given relation to the data displayed on this map (including accuracy, reliability, completeness, currency or suitability) and accepts no liability (including without limitation, liability in negligence) for any loss, damage or costs (including consequential damage) relating to any use of the data.



### Goondiwindi (east)

- Existing trunk network - road
- Existing trunk network - shoulder and footpaths (State Controlled Road)
- Service Catchment
- Cadastral boundary
- Local government boundary
- Waterway



22/03/2018

GDA 94 Zone 56

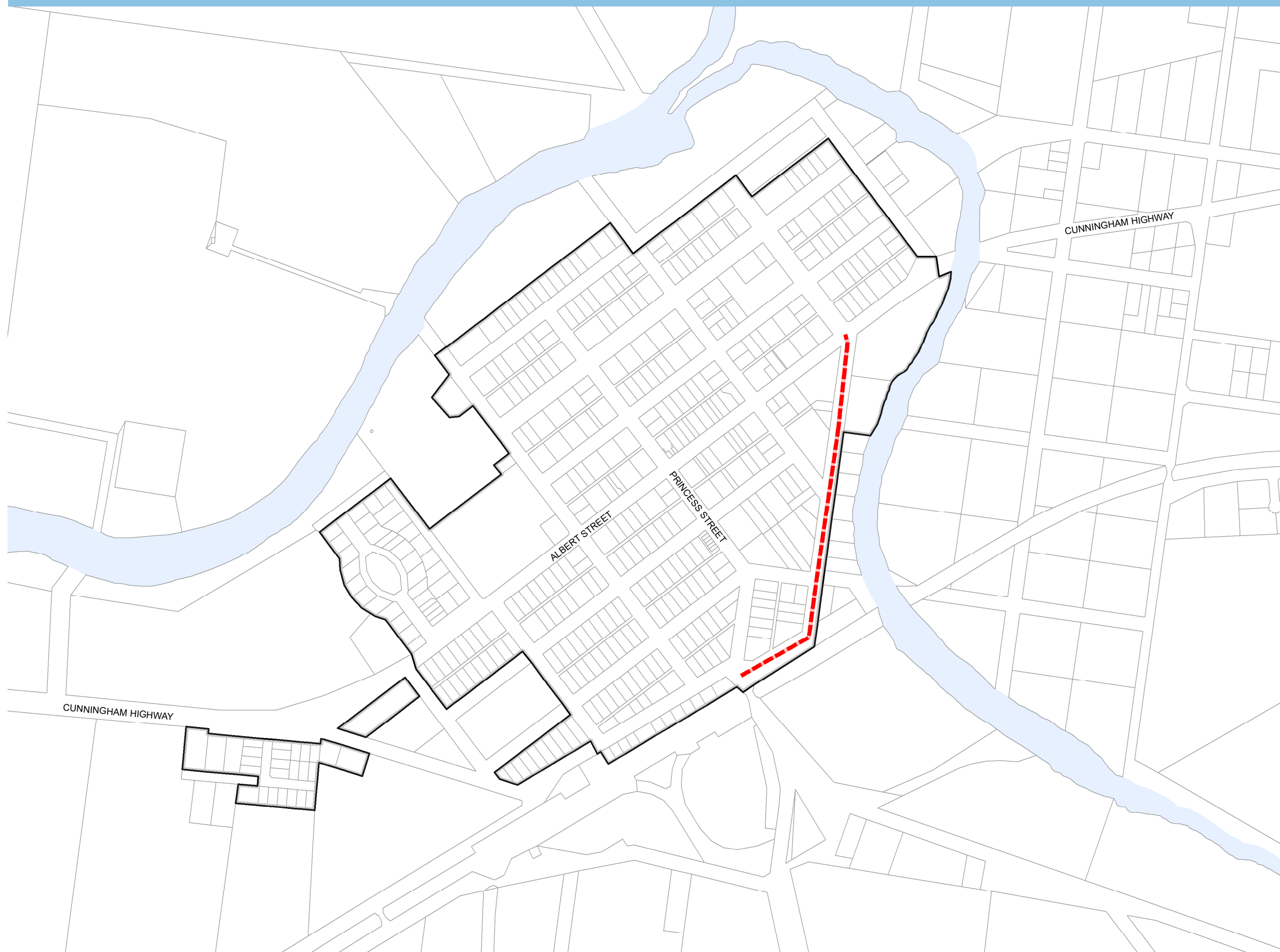
Data Source: QGIS & Nearmap 2017

0 0.225 0.45  
1:10,000 km

**Disclaimer**  
This product is for informational purposes and may not have been prepared for, or be suitable for legal, engineering, or surveying purposes. The map layers displayed are compiled from various sources. Therefore, no warranty is given relation to the data displayed on this map (including accuracy, reliability, completeness, currency or suitability) and accepts no liability (including without limitation, liability in negligence) for any loss, damage or costs (including consequential damage) relating to any use of the data.

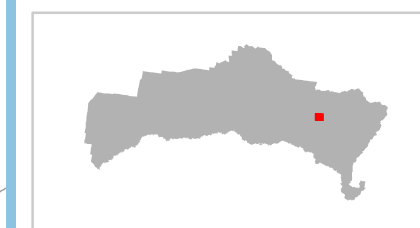






### Inglewood

- Existing trunk network - road
- Existing trunk network - shoulder and footpaths (State Controlled Road)
- Service Catchment
- Cadastral boundary
- Local government boundary
- Waterway



22/03/2018

GDA 94 Zone 56

Data Source: QGIS & Nearmap 2017

0 0.175 0.35  
1:8,000 km

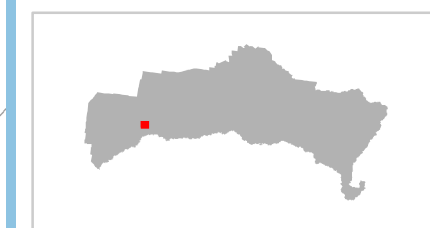
**Disclaimer**  
This product is for informational purposes and may not have been prepared for, or be suitable for legal, engineering, or surveying purposes. The map layers displayed are compiled from various sources. Therefore, no warranty is given relation to the data displayed on this map (including accuracy, reliability, completeness, currency or suitability) and accepts no liability (including without limitation, liability in negligence) for any loss, damage or costs (including consequential damage) relating to any use of the data.





### Talwood

- - - Existing trunk network - road
- - - Existing trunk network - shoulder and footpaths (State Controlled Road)
- Service Catchment
- Cadastral boundary
- Local government boundary
- Waterway



22/03/2018

GDA 94 Zone 56

Data Source: QGIS & Nearmap 2017

0 0.2 0.4 km  
1:9,000

**Disclaimer**  
This product is for informational purposes and may not have been prepared for, or be suitable for legal, engineering, or surveying purposes. The map layers displayed are compiled from various sources. Therefore, no warranty is given relation to the data displayed on this map (including accuracy, reliability, completeness, currency or suitability) and accepts no liability (including without limitation, liability in negligence) for any loss, damage or costs (including consequential damage) relating to any use of the data.

